



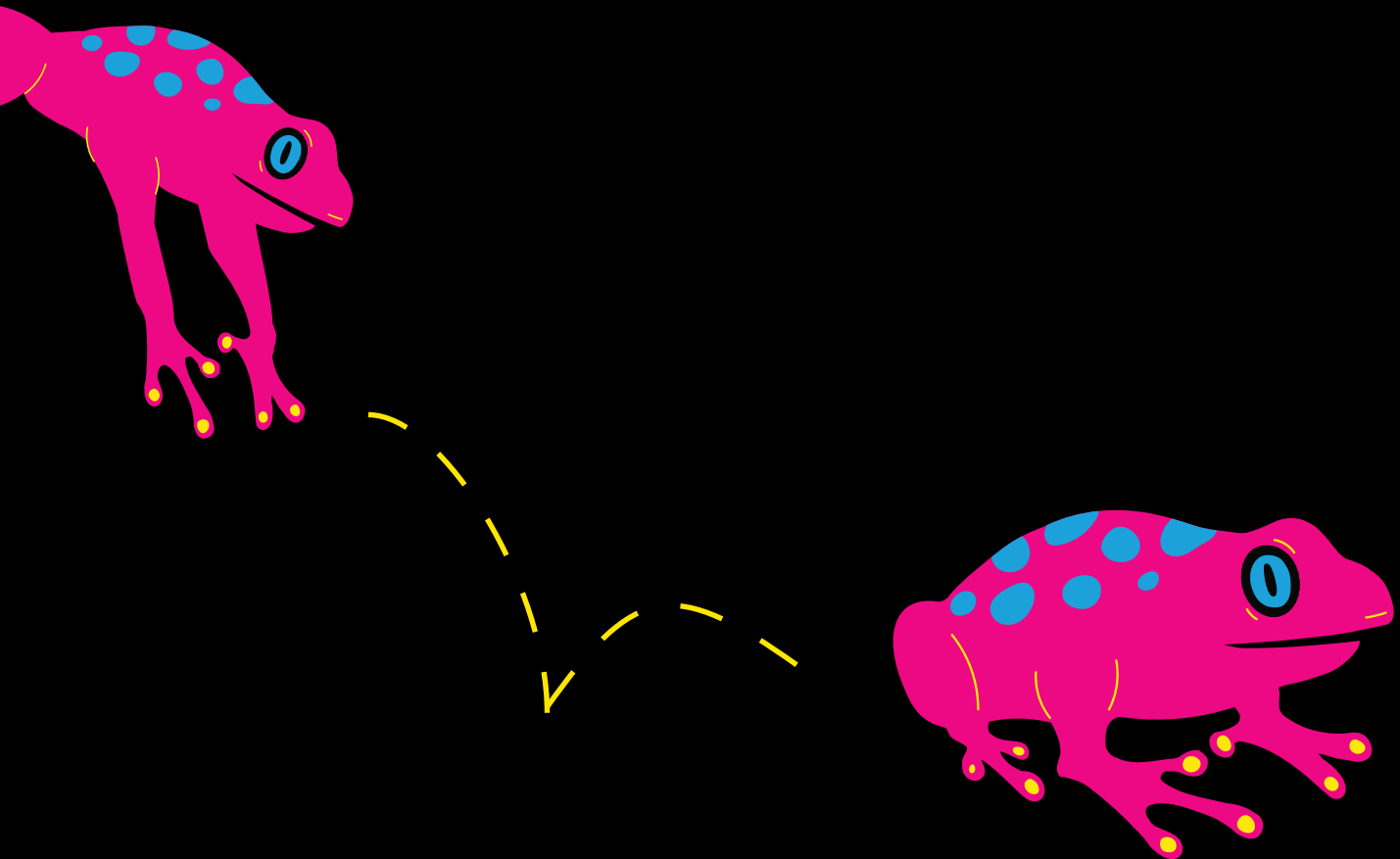
Leap-In Transposase[®] Platform for Robust Cell Line Development

High Productivity

Rapid Timelines

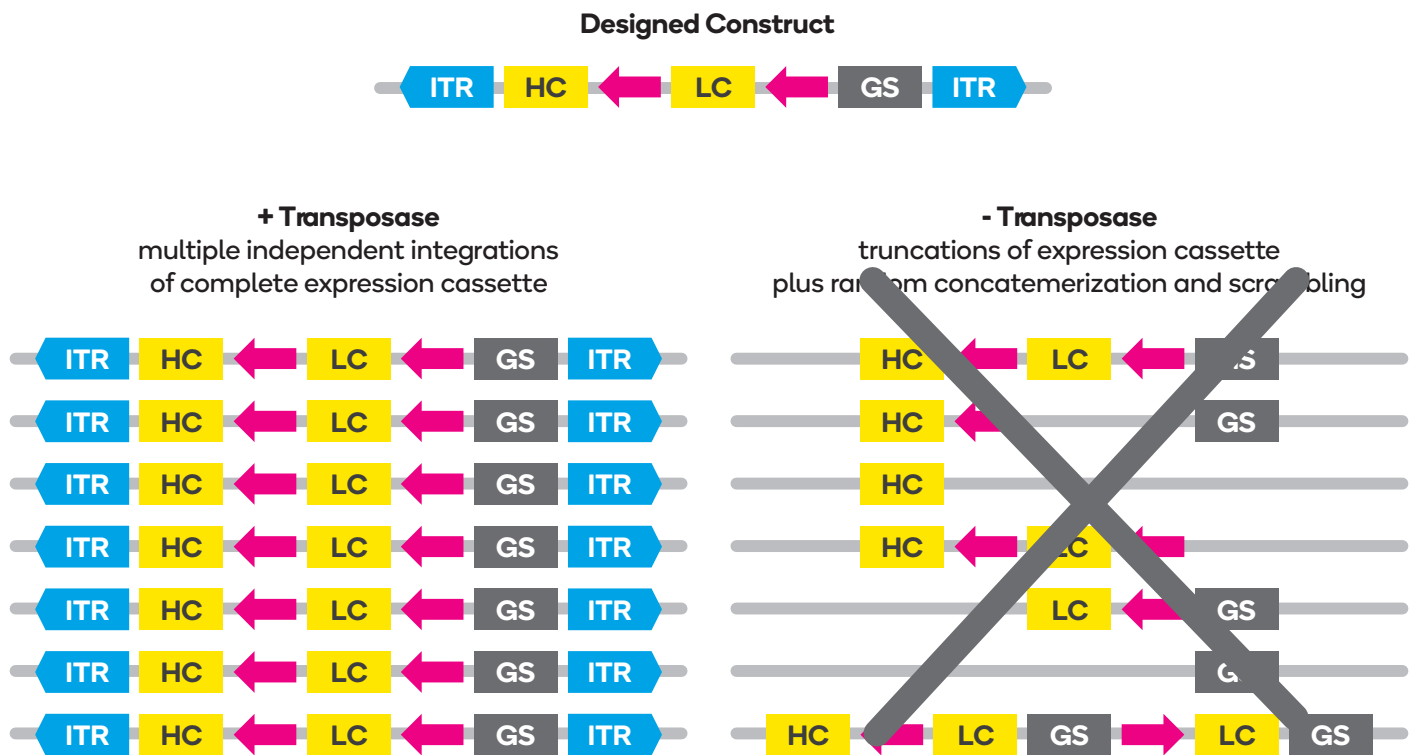
Low Risk Development

Robust Genetic Stability



Transposition for robust cell line development

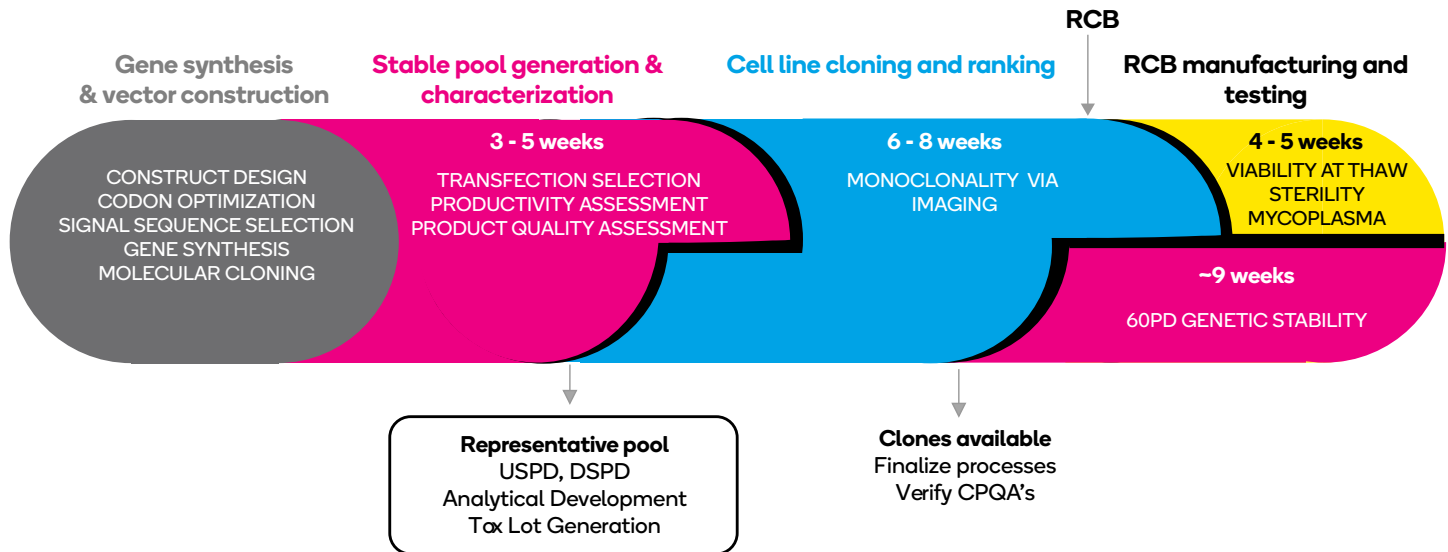
- Features:**
- Integration into transcriptionally active chromatin
 - The integrity of the transposon cassette remains intact
 - Genome integration via enzymatic cut-and-paste mechanism
 - Once integrated, the transposon remains integrated = stable



Benefits:

- High titer: Bulk pool 7+ g/L, clones 10+ g/L
- Rapid timelines: Transfection to RCB in ~10 weeks
- Predictable stability: > 90% of clones retain 100% of expression
- Robust tech-transfer: Predictable growth and titer across scales
- Low risk platform: Broad market adoption, >30 IND's across 3 regulatory jurisdictions

From Transfection to RCB in ~10 weeks:



Uniquely enabling bulk pools:

- Pools are predictive of clones: Titer and Product Quality
- High titer pools: Enable multi gram quantities of representative product
- Enable early process development - Upstream, Downstream, Analytical
- Utility in tox lot generation reducing IND timelines
- Pools have been used in multiple COVID-19 Phase I IND filings

References:

Rajendran et.al., *Biotechnol. Bioeng.*, 2021, 118(6):2301-2311

Protected by more than 10 issued patents

The Leap-In Transposase® platform is available for licensing or as a service provided by ATUM. Contact us for more information:

+1 650 853 8347

+1 877 DNA TOGO

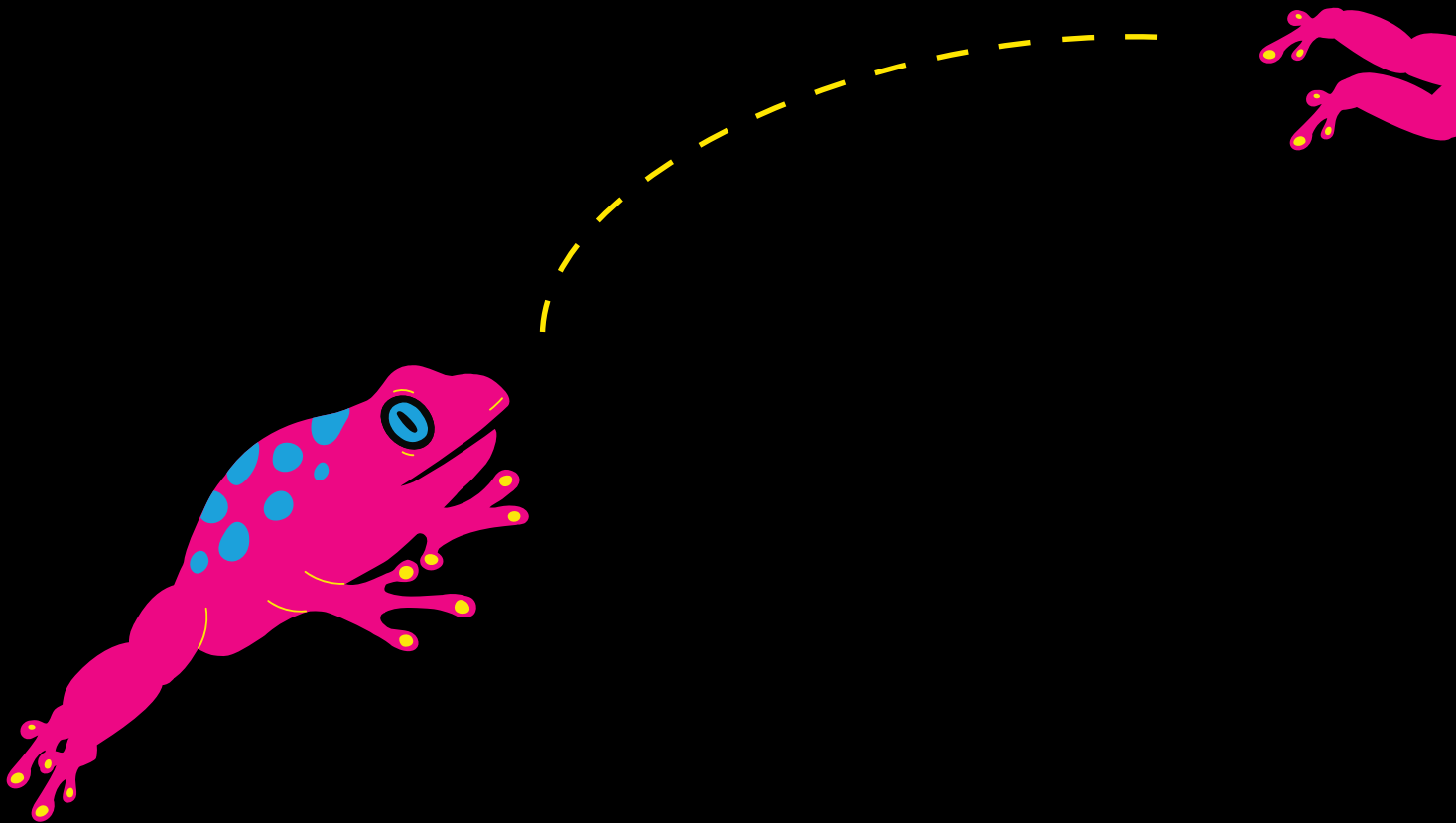
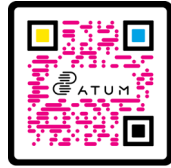
info@atum.bio



Your Life Science partner

37950 Central Court
Newark, CA 94560
U.S.A.

+1 877 DNA TOGO
+1 650 853 8347
info@atum.bio
www.atum.bio



research. create. break through.

